



BUILDING RESILIENT
ECONOMIES *in*
COAL COMMUNITIES



BRECC National Network

- All coal community stakeholders
- Resource platform + learning series
- Learn best practices + build connections

Action Challenge

- Cross-sector community teams
- Technical assistance + coaching support
- Develop an economic diversification strategy

Commitment Coalition

- Local coal community leaders
- Peer exchanges + site visits
- Strengthen local capacity + advance projects for economic resilience

Storytelling

- Highlight community success stories
- Interviews, blogs and podcasts
- Share challenges and solutions with a national audience

BRECC Partners:



Local knowledge & experience in coal & rural communities



Economic Development Expertise



An Intentional Approach to Community Coaching



Strong track record of moving communities from ideation to implementation



The BRECC National Network

connecting coal communities

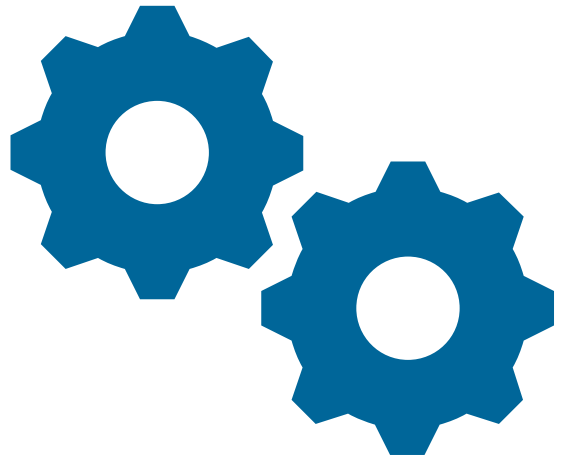


BUILDING RESILIENT
ECONOMIES *in*
COAL COMMUNITIES



**BUILDING RESILIENT
ECONOMIES *in*
COAL COMMUNITIES**

Join the BRECC National Network!



Register for the BRECC National Network learning session on Thursday, July 25th!



The BRECC Commitment *Coalition*

Empowering Local Leaders

E•D•A
U.S. ECONOMIC DEVELOPMENT ADMINISTRATION

NATIONAL
ASSOCIATION
OF COUNTIES
NACo.


BUILDING RESILIENT
ECONOMIES *in*
COAL COMMUNITIES

The BRECC Commitment Coalition

Empowering Local Leaders

COAL COMMUNITIES COMMITMENT COALITION



EMILY BALL, BRISTOL HERALD COURIER

Tori Brown, U.S. EDA Community of Practice Coordinator, speaks about their mission of growth during the Building Resilient Economies in Coal Communities welcome reception at the Birthplace of Country Music Wednesday evening.

'FOCUS ON ... SUCCESS'

Coal town leaders from across nation attend Bristol reception

DAVID MCGEE
BRISTOL HERALD COURIER

BRISTOL, Va. — Southwest Virginia rolled out the red carpet Wednesday for a delegation of officials from various struggling

U.S. coal communities eager to learn more about economic diversification efforts.

The Birthplace of Country Music Museum hosted a reception for the Coal Communities Commitment Coalition, a leadership and peer-learning network of 20 local leaders who come to learn about different economic diversification strategies.

Several Virginia state officials

were also on hand, eager to show off some Southwest Virginia success stories.

The coalition is part of the National Association of Counties Building Resilient Economies in Coal Communities initiative and supported by the U.S. Economic Development Administration.

Will Payne, the director of InvestSWVA and a member of the coalition, said this was the first

outing for the group and a great opportunity to showcase this region.

"There will be four site visits in the next two years and Virginia was selected to go first," Payne said. "I think its because of the creative strategies that we're using to diversify the economy. We're going to focus on areas

Please see **COALITION**, Page A4





The BRECC Action Challenge

Building Community Resilience

E•D•A
U.S. ECONOMIC DEVELOPMENT ADMINISTRATION

NATIONAL
ASSOCIATION
OF COUNTIES
NACo.

BUILDING RESILIENT
ECONOMIES *in*
COAL COMMUNITIES

Background

BRECC Cohort 1:
Featured Community,
Floyd County KY



BRECC ACTION CHALLENGE: STRATEGIC ECONOMIC DIVERSIFICATION PLAN

HISTORIC KENTUCKY COAL COUNTRY

Floyd County, KY

FRIENDLY - INDUSTRIOUS - GORGEOUS

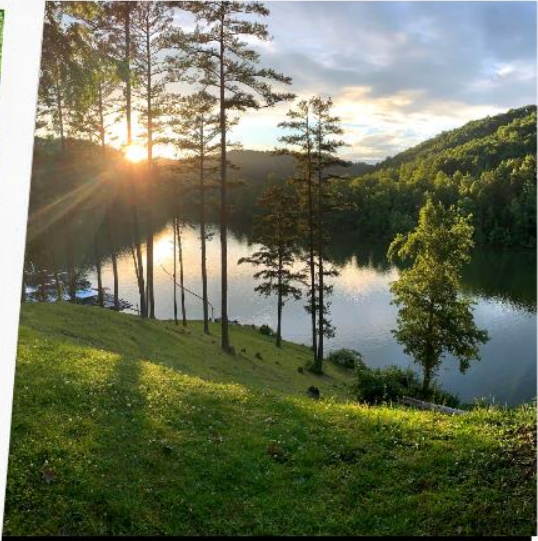
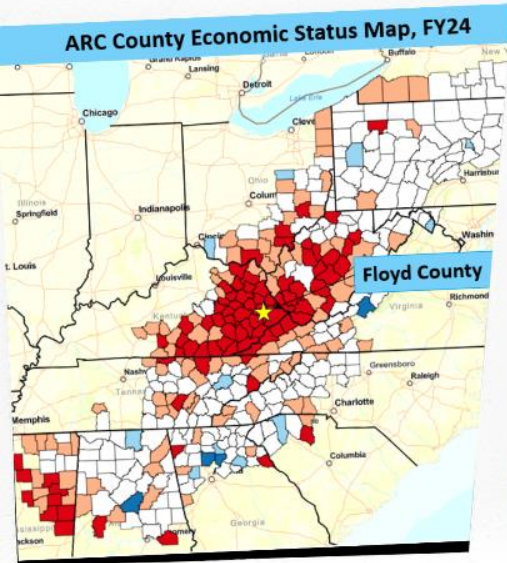
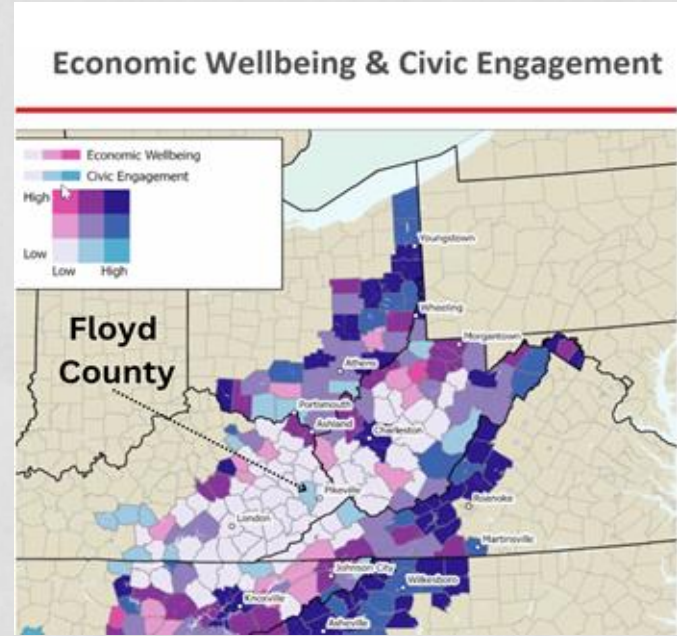
WELCOME YALL!

PRESENTED BY:
RUTHIE CALDWELL, VISION GRANTED
JULY 23-24, 2024

FLOYD COUNTY, KY

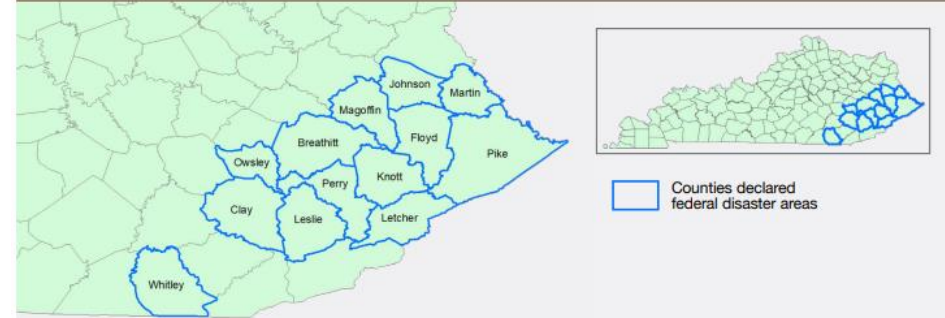
OVERVIEW

- **Population:** 35,942 (rural)
- **Location:** Beautiful Appalachian mountains of eastern Kentucky
- **"Distressed" County** designated by Appalachian Regional Commission
- **Historic Coal Camps:** 10 company-owned coal camps built before 1941 (most of any county in eastern KY!)
- **Former Energy Assets:** over 100 coal-related sites closed since 2009
- **Coal Jobs Lost: 1,638 jobs lost** in Floyd County from 1988-2023. [Kentucky Coal Facts](#)
- **Employment:** previously coal. Now mainly healthcare, social assistance, retail, education.
- **Housing Gap:** 1,395 affordable housing units (Kentucky Housing Corporation, [Housing Gap Analysis](#), 2024)
- **Assets:** tourism, **GREAT PEOPLE - skilled workforce with strong work ethic, talented musicians and artists / Country Music Highway**, and **growing broadband network with telework opportunities.**
- **Civic Engagement:** low economic well-being but highest civic engagement in eastern Kentucky = HOPE





Map 1. Counties Declared Federal Disaster Areas Following the July 2022 Flood



Source: OpenFEMA Dataset: Disaster Declarations Summaries - v2.

Central Appalachian Flood

The July 2022 floods were considered a thousand-year flood, and a federally declared a disaster in 13 KY counties, including Floyd. Regional damage included:

- **Deaths:** 44 people
- **Homes:** Nearly 9,000 homes were damaged or destroyed, with an estimated repair cost of \$87.38 million
- **Rescues:** 1,400+ people needed to be rescued, including 600+ by helicopter

**Source: Google AI Overview, retrieved 07/18/2024*

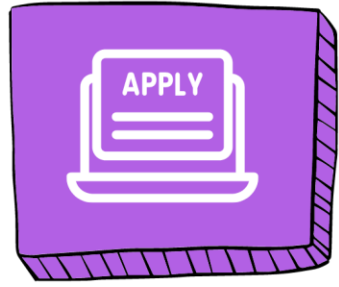
Timeline

Before & After
BRECC...



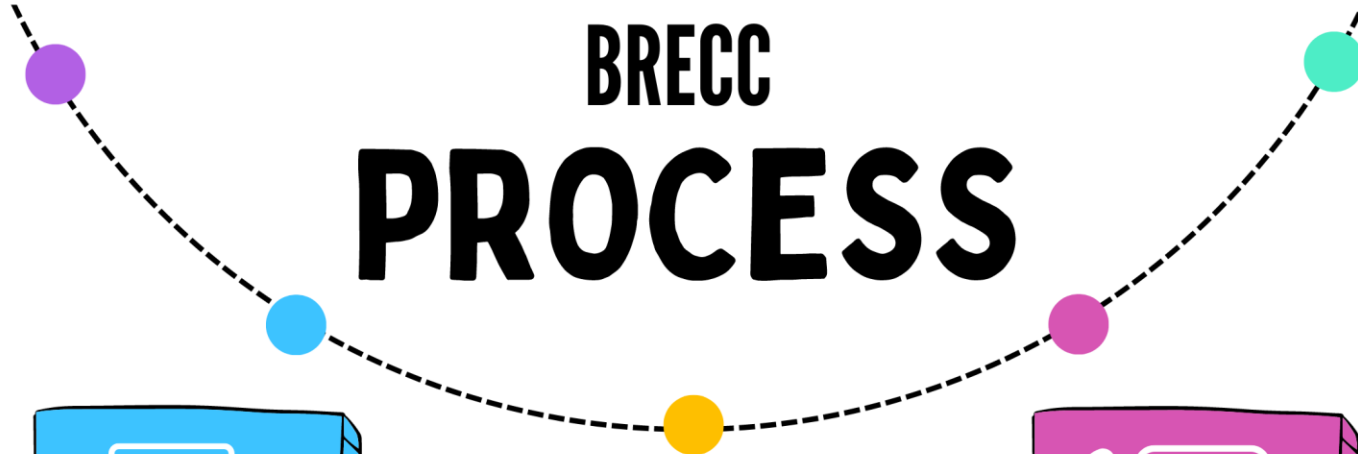
Timeline: Floyd County KY Before & After BRECC





01. Apply

A lead organization recruits a team with lots of diverse community partners to draft and submit an application to the BRECC program.

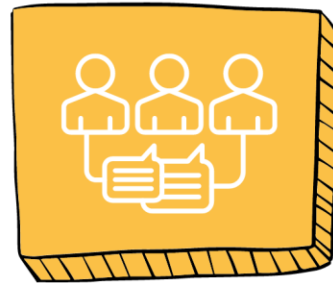


BRECC PROCESS



02. Assess

The BRECC coach coordinates meetings and provides templates for the group to assess their community needs, assets, and opportunities. They set priorities and form working groups who meet regularly.



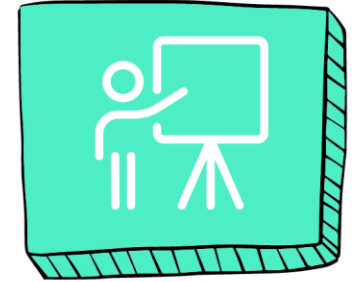
03. Engage

Working groups meet with other relevant community members to gain feedback on data collected and develop concepts for the plan.



04. Draft

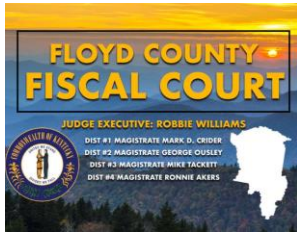
Working groups draft their sections of the plan using the provided template and the coaches assist the BRECC with finalizing sections of the plan into one cohesive document.



05. Present

Two members of the BRECC team present the final plan in D.C. where they meet peers and connect with federal agencies and potential partners who could help implement the plan.

TEAM MEMBERS



SOAR

- Missy Allen
- Ruthie Caldwell
- Jimmy Owsley
- Robert Allen

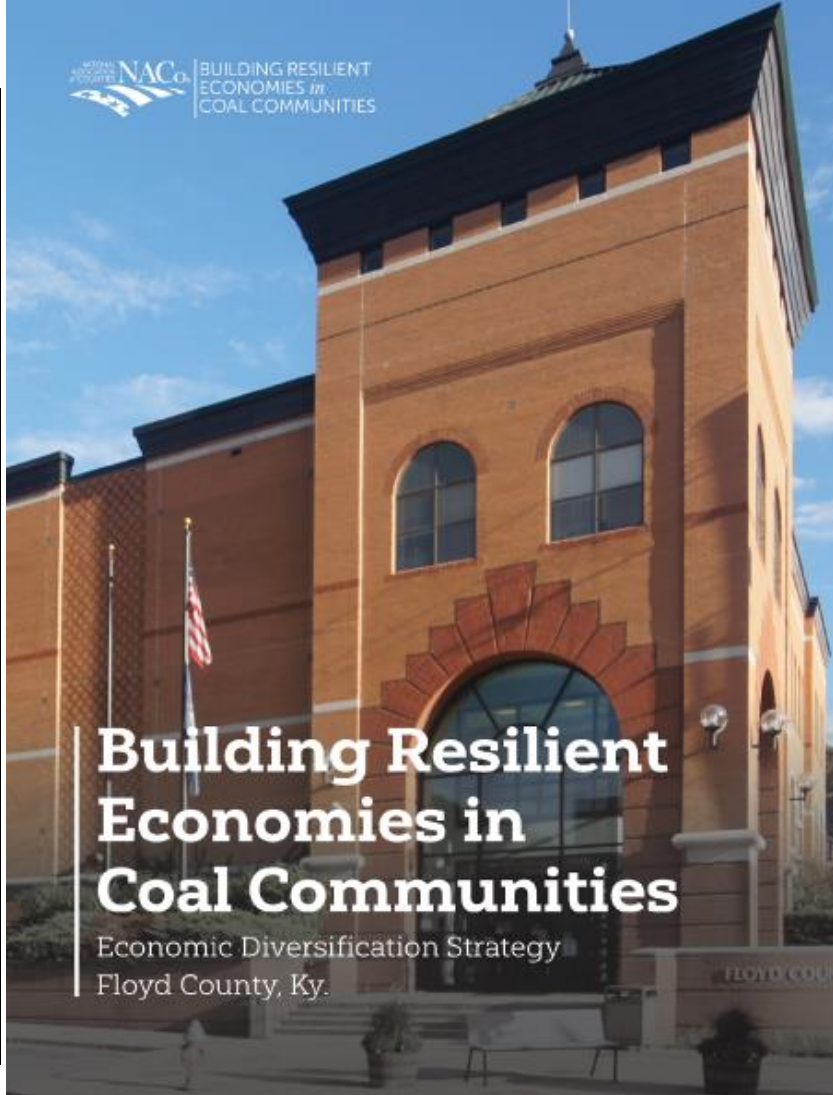
- Jeni Meyer
- Angie Reynolds
- Jessy Workman
- Samantha Johnson

- Blake Moss
- Dorian Moe
- Kathy Allen
- Natasha Friend

COACH



Economic Diversification Pathways Snapshot



Building Resilient Economies in Coal Communities

Economic Diversification Strategy
Floyd County, Ky.

Housing & Residential Infrastructure

Floyd County provides safe, accessible housing and residential infrastructure for residents that centers their needs, is climate resilient, fosters community connection, facilitates equitable economic opportunity, allows residents to thrive, and encourages local development and pride.

Primary Partners
Floyd County Executive Judge's Office, FLTRG, Floyd County Community Foundation, Sandy Valley Transportation Services

- Priority Objectives (Target 2024)**
- Construction of 11 new homes in Wayland
 - Purchase property for New Hope Estates
 - Begin identifying site for new flood recovery center
 - Acquire funding for Allen Coal Site
 - Pursue transportation capacity building funding

Local Business Development

Floyd County is a place where locally rooted entrepreneurs are equipped and empowered to create and maintain thriving, sustainable businesses. Mutual support between entrepreneurs and community stakeholders cultivates the deep relationships necessary for the ongoing growth of local businesses.

Primary Partners
BRECC Local Business Task Team, Chamber of Commerce, Big Sandy ADD, Floyd County Small Business Working Group, SOAR, Mountain Association, CEDAR

- Priority Objectives (Target 2024)**
- Release county business survey
 - Hire consultant for market assessment
 - ID funders for FloCo fund
 - Develop GIS map of available buildings
 - Develop local business resource guide
 - Engage with CEDAR in high school business programming

Workforce Development

Floyd County is a place where residents are empowered to live and work because health and education are prioritized. Education agencies, local government, and nonprofits collaborate to overcome workforce challenges and help community members gain quality jobs that allow them to thrive.

Primary Partners
Floyd County Executive Judge's Office, TEK Center, Kentucky WORCS, M2 Initiative, Talent Pipeline Management

- Priority Objectives (Target 2024)**
- Conduct workforce opportunity assessment (if awarded funds 2024)
 - ID location and funders for TEK Center development
 - Acquire funding to initiate workforce balancing program activities
 - Run Bus to Business Program (ongoing)
 - Plan youth alternative workforce opportunities fair

BRECC: Floyd Economic Diversification Strategy

BRECC Feedback

FANTASTIC!

- Multiple Partners:** has a great application process that encourages inviting lots of partners which brings diverse perspectives and resources to inform the plan.
- Coaches:** WV Hub was a great coach keeping our group on track, scheduling and coordinating meetings, and sharing resources & funding opportunities.
- Writing Assistance:** everyone ended up giving much more time than they expected so having WV Hub put all the info together in the end was crucial.

Could Improve...

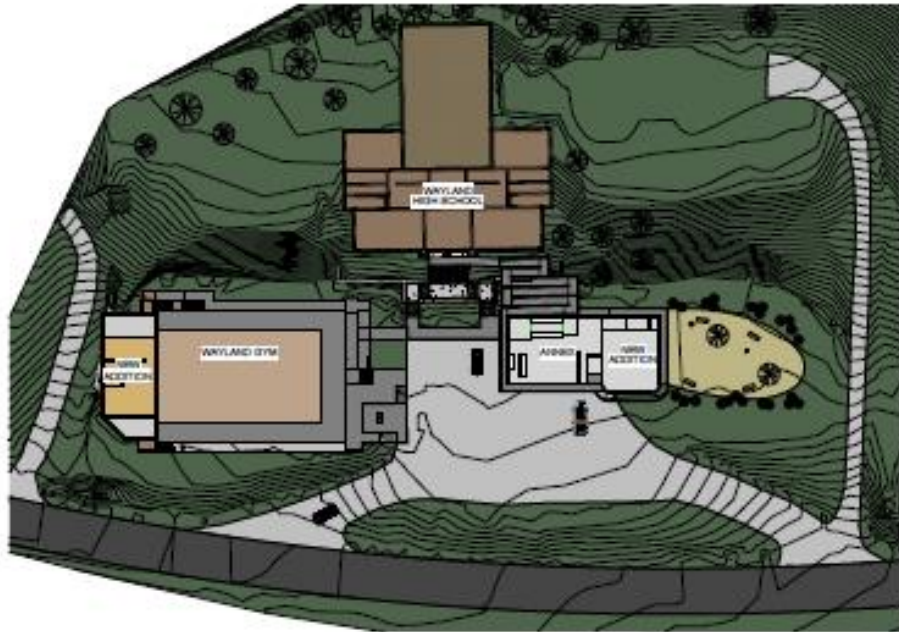
- Request Team Leads:** the application should request 3 people commit to volunteer 5-10 hours per month to gather information.
- Add a Peer Networking Event:** pay travel expenses for a few people to go to an in-person kick-off event to meet peers from other communities to learn about the strategic planning process and share local challenges and potential solutions.
- Needs Some In-Person Facilitation:** have coaches travel to facilitate at least 1 in-person deep dive strategic planning workshop mid-way. Other meetings can be done online.

IMPACTS

Because of BRECC...



WAYLAND



Just Transition Fund

BRECC Projects Supported:

- **Wayland KY:** Conceptual Designs & Cost Estimate
- **TEK Center:** Preliminary Engineering Report
- **PLACE Initiative:** In-Person Community Pre-Assessment
- **Metals Innovation Initiative (Mi2) KentuckyWORCS:** Federal Funding Consultation



ANNOUNCEMENT



Floyd County awarded \$100,000 from Department of Energy Capacity Building for Repurposing Energy Assets



U.S. DEPARTMENT OF
ENERGY

Fossil Energy and
Carbon Management

For Immediate Release
1/11/2024

Contact
FECMCommunications@hq.doe.gov

U.S. DEPARTMENT OF ENERGY INVESTS \$800,000 FOR WORKFORCE DEVELOPMENT OPPORTUNITIES IN ENERGY COMMUNITIES ACROSS THE UNITED STATES

Eight local government and non-profit organizations will receive funding and technical assistance toward repurposing existing energy facilities, equipment, and infrastructure

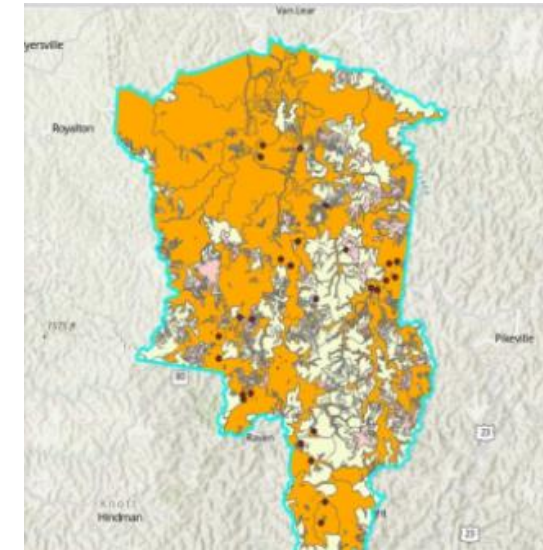
WASHINGTON, D.C. – The U.S. Department of Energy’s (DOE) Office of Fossil Energy and Carbon Management (FECM) today announced \$800,000 in federal funding for eight local government and non-profit organizations representing communities across the country, from Alaska to Pennsylvania, that will each create a roadmap toward repurposing their existing energy assets. The Capacity Building for Repurposing Energy Assets initiative will assist these communities, where a significant portion of their local economy has historically been supported by energy assets, such as coal, oil, and/or natural gas power facilities and accompanying equipment and infrastructure. This funding will help the communities build technical capacity and develop a workforce necessary to help revitalize energy systems, address environmental impacts, and tackle challenges associated with energy assets that have been retired, or are slated for retirement. This effort advances FECM’s mission of minimizing environmental and climate impacts of energy systems and industrial processes, while working to achieve net-zero emissions across our economy. It also supports DOE’s broader mission of ensuring efficient transformation of the energy system, while prioritizing labor and community engagement.

BIG THANK YOU to Rocky Mountain Institute for sharing this funding opportunity during a BRECC meeting!

*source: <https://content.govdelivery.com/accounts/USDOEOFE/bulletins/38441c4>

Outcomes: Floyd County's "Capacity Building for Repurposing Energy Assets" Award

- **Increase Staff Capacity:** hiring American Connection Corps Fellow to help plan and coordinate redevelopment projects.
- **PLACE Initiative Community Assessment:** engaged local residents in planning ways to attract "climate migrants" who are leaving places with drought and wildfires to come live and work in Floyd.
- **Coal Asset Map:** developed an interactive map of 25+ former coal sites listing assets and potential reuse.
- **Plan & Fund BRECC Projects:** developed a list of 50+ funding and technical assistance opportunities. Applied for 8. Developing concepts for 3 applications now.



Floyd County Pre-Assessment Workshop: Key Takeaways



FloydCounty_BRECC_Funding Prospect List_draft1_April2024

A	B	C	D	E	F	G
SPONSOR	PROGRAM	AMOUNT	SYNOPSIS	ELIGIBLE RECIPIENTS	LINK TO GUIDANCE	REMARKS
U.S. Dept of Housing and Urban Development	Rural Capacity Building for Community Development and Affordable Housing Grants (RCA)	ceiling: \$3.5M floor: \$750k	Enhances the capacity and ability of rural housing development organizations, Community Development Corporations (CDCs), rural local governments, and Indian tribes (eligible beneficiaries) to carry out affordable housing and community development activities in rural areas for the benefit of low- and moderate-income families and persons.	National Organizations that are 501(c)(3) nonprofits, other than institutions of higher education	https://www.hud.gov/cpr/affordablehousing/grants/rca	
U.S. Dept. of Agriculture-Rural Development (USDA RD)	Rural Housing Site Loans	2-year loans	Provides two types of loans to purchase and develop housing sites for low- and moderate-income families: (a) Section 523 loans to acquire and develop sites only for housing to be constructed by the Self-Help method; (b) Section 524 loans to acquire and develop sites for low- or moderate-income families, with no restriction as to the method of construction.	Section 523 loans: (1) Private or public non-profit organizations that will provide sites solely for self-help housing Section 524 loans: (1) Private or public non-profit organizations; (2) Non-profits that have the legal authority to operate a revolving loan fund; (3) Non-profits that have the financial, technical and managerial capacity to comply with relevant federal and state laws and regulations; and (4) Federally-recognized Tribes	https://www.rd.usda.gov/programs-services/section-523-housing-grants	3/28/2024
U.S. Dept. of Agriculture	Multi-Family Housing Loan Guarantees	Loan guarantee up to 80% of loan amount	works with qualified private-sector lenders to provide financing to qualified borrowers to increase the supply of affordable rental housing for low- and moderate-income individuals and families in eligible rural areas and towns. Funds may be used for: Construction, improvement and purchase of multi-family rental housing for low to moderate income families and individuals, buying and improving land, and providing necessary infrastructure. Three loan guarantee options: • Permanent loan guarantee: permanent financing only • Construction and Permanent Guarantee: construction advances and permanent financing once regulatory requirements have been met. • Single Continous guarantee for construction and permanent financing. Projects that have a loan-to-cost	(1) Nonprofit and for-profit corporations (2) Individuals, partnerships, and trusts (3) Most state and local governmental entities (4) Federally-recognized tribes	https://www.rd.usda.gov/programs-services/section-508-rd-pl-ent-f	ONGOING Apply through local RD office

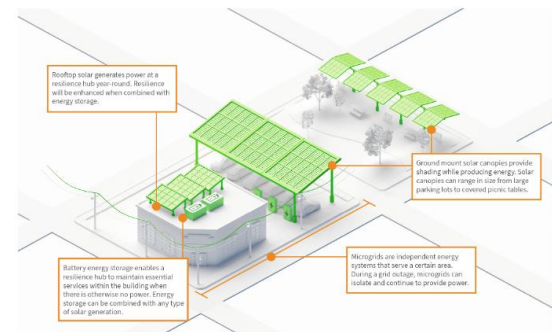
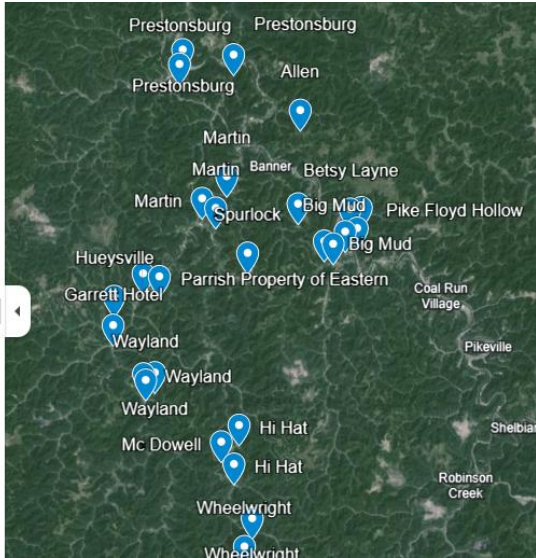
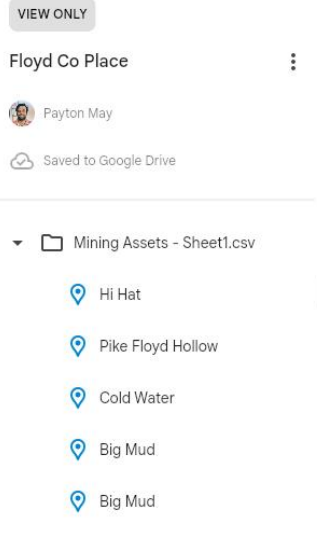
Future Plans

BRECC Projects in
Development





Housing & Residential Infrastructure

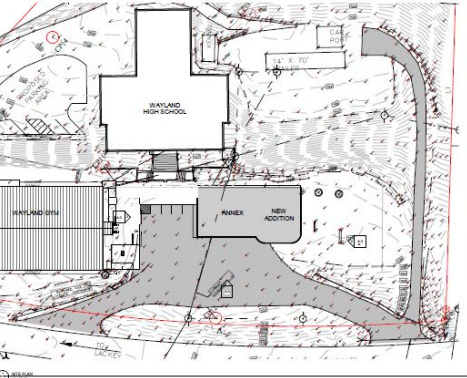


- **CONCEPT:** BRECC Coal Asset Map is being used to identify potential properties for higher ground housing developments and a Community Resilience Hub to prepare for future disasters.
- **NEEDS:** Technical Assistance or Funding for site selection and Design & Engineering documents.

*source: RMI, Resilience Hub graphics: [Weathering Climate Disasters with Resilience Hubs - RMI](#)

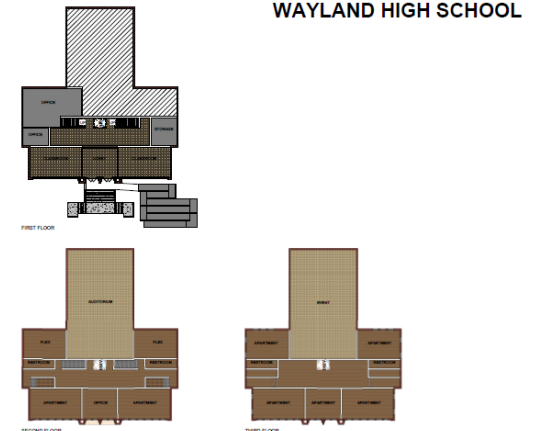


Local Business Development



- **CONCEPT:** Repurpose vacant high school property into tourism & economic development driver for Wayland KY with 1950's diner, sports museum, teleworking hub, higher ground housing, and flex-space with lodging for sports camps / volunteers & survivors to prepare for disasters.
- **NEEDS: Construction / Renovation: \$7,899,996**

WAYLAND





Workforce Development

- **CONCEPT:** Partner with Metals Innovation Initiative (Mi2) and Kentucky Chamber Foundation Talent Pipeline Management Program (TPM) to pilot KentuckyWORCS, a workforce development strategy that will redistribute high demand, critical metals manufacturing jobs to Floyd County by developing a satellite office hiring for high demand quality jobs matched with local workforce talent.
- **NEEDS:** \$400,000 to pilot program.

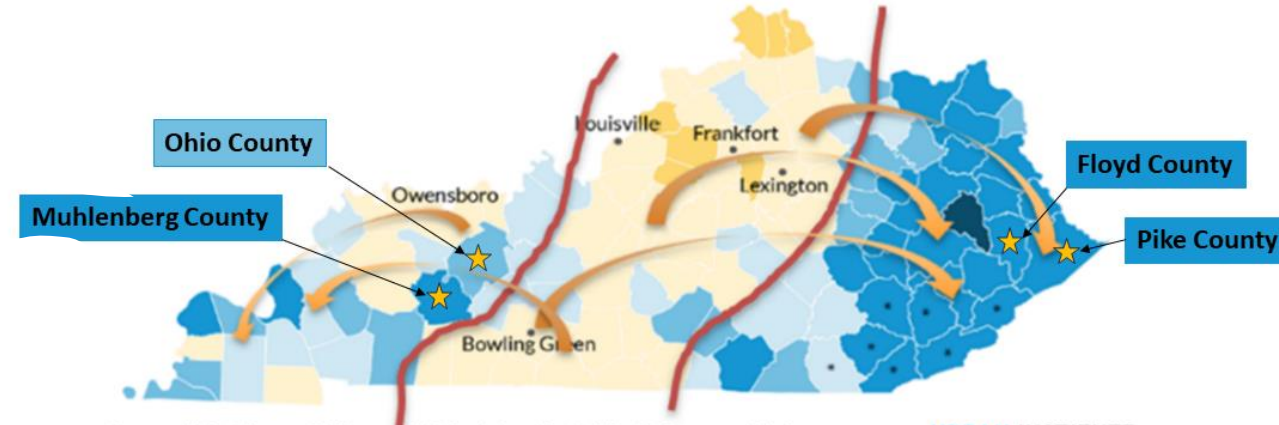
KentuckyWORCS: Map of Pilot Counties

June 2018 Unemployment Rate across Kentucky's Counties

3% 4% 5% 6% 7% 10% 15%



* = Work requirement exempt



Source: "Databases, Tables, and Calculators by Subject," Bureau of Labor Statistics, accessed August 8, 2018, <https://www.bls.gov/data/>.

URBAN INSTITUTE

Notes: Rates are not seasonally adjusted. *Counties included in the Paths 2 Promise



THANK YOU!

Come Visit Us in Floyd County, KY



Contact: ruthie@visiongranted.com



BUILDING RESILIENT ECONOMIES *in* COAL COMMUNITIES

Grace Blanchard
Program Manager
Resilient Economies & Communities
gblanchard@naco.org
(202) 942-4274

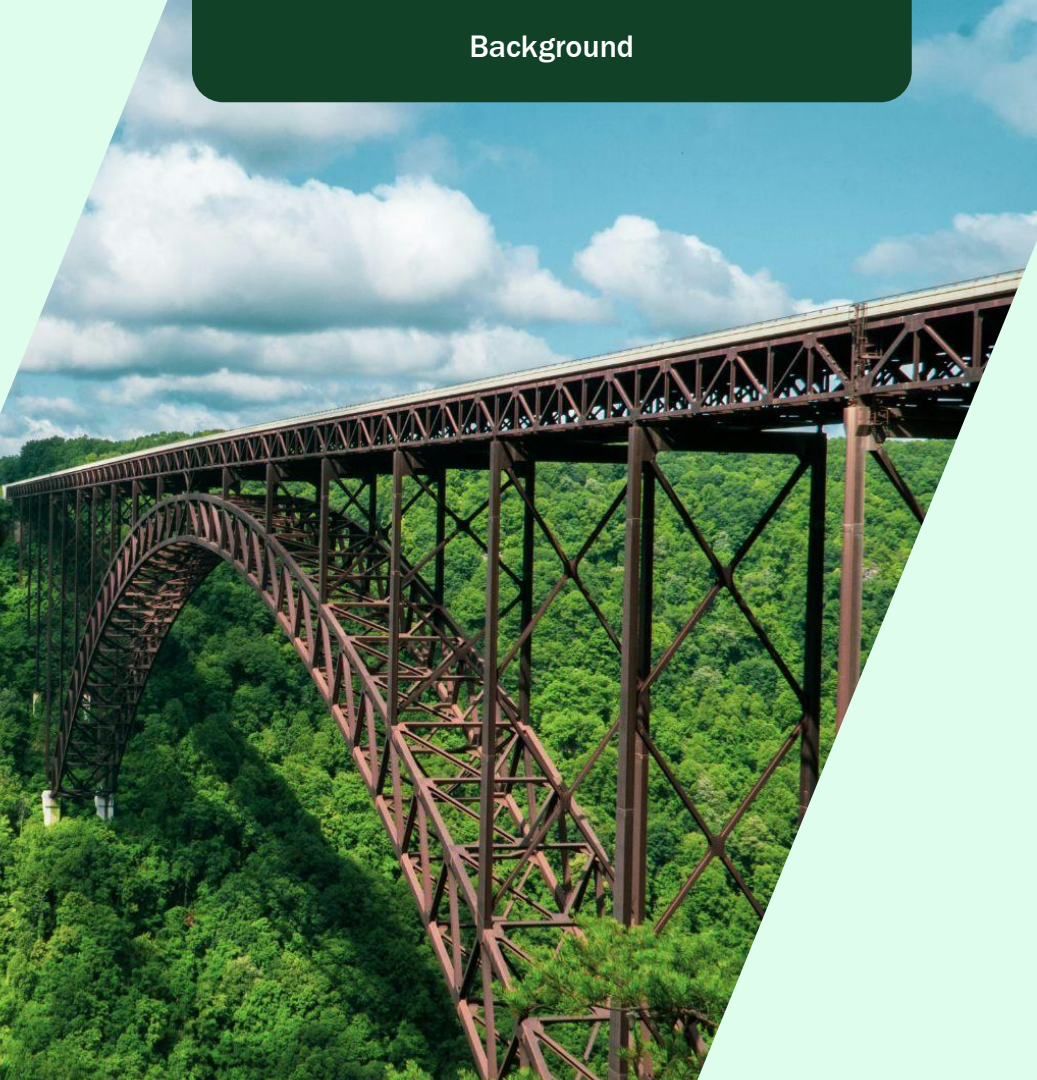
Just Transition Fund

Accelerating economic resilience
in hard-hit coal communities

**JUST
TRANSITION
FUND**

**IWG Stakeholder
Meeting**
July 24, 2024





Our Mission

Create economic opportunity for communities and workers hit hardest by coal's decline

Our Goal & Approach

To strengthen and diversify the economies of hard-hit coal communities from the bottom up.

Our Origin

The Obama Administration's POWER Initiative (2015)

OUR FRAMEWORK



“The Just Transition Fund is...what peak philanthropic performance looks like.”

Jennifer Granholm
Secretary, U.S. Department of Energy

We believe in place-based economic development strategies that support local entrepreneurs and build on community assets.



Promote Economic Diversification

We support projects in a variety of low-carbon sectors that create jobs, build wealth, and strengthen the local economy.



Expand Workforce Development

We help scale wraparound workforce development programs that train former coal workers and community members for jobs in the new economy.



Improve Infrastructure

We target efforts to improve and expand infrastructure, like broadband, that is essential for an inclusive economic transition.

Core Strategies



Access



Advocate



Convene

National Economic Transition Platform

Publicly released with 85 signatories in June 2020, the NET platform highlights seven pillars of workforce and economic development solutions that federal policymakers should prioritize.

Local Leadership

**Restorative
Economic
Development**

Workforce

Reclamation

Infrastructure

Bankruptcy

**Coordination and
Access**

NET Impact

Work to turn the platform into action has helped to yield historic funding from Congress, executive action, and coordination across key agencies.

Creation of the **Interagency Working Group on Coal and Power Plant Communities and Economic Revitalization** following the NET Coalition's call for a federal task force.

The **American Rescue Plan** led the U.S. Economic Development to award \$552M to "Coal Communities Commitment"

The **CHIPS and Science Act** authorizes \$1B for the RECOMPETE Program promoting economic development in persistently distressed communities.

The **White House Environmental Justice Advisory Council** drew on the NET platform for its recommendations to the White House and the creation of the Justice40 Initiative and the sought JTF input on the Inflation Reduction Act

The **Bipartisan Infrastructure Law** invests \$65B in broadband expansion and \$11B to clean up abandoned mines

The **Inflation Reduction Act** provides hundreds of billions for energy communities, plus a 10% bonus on clean energy production tax credits and a \$4B carve-out for manufacturing projects in energy communities

→ Today

Hundreds of billions of dollars are available for energy communities. But without targeted intervention, communities cannot access these funds.



Our Federal Access Center

Application-Ready Support

- **Flexible Grants** (match, grant writing, analysis, convening)
- **Technical assistance** (federal navigation, grant review, grant writing)

Early-Stage Capacity Building Support

- **Coal Communities Get Ready! Challenge** provides grants and TA for early-stage development of a transformational idea, with the long-term goal of accessing federal funds

Partnering with Federal Agencies

- Energy Communities IWG
- DOE Office of Indian Energy Policy and Programs

Federal Access Center Wins

\$250M pending to EDA

RECOMPETE finalists: Mobile **1**
Area Chamber of Commerce (AL),
Plenty Doors CDC (Crow) Santa
Cruz County (AZ), Shaping Our
Appalachian Region (KY), Wind
River Development Fund (WY)

2

\$320M of NSF Engine Grant
Awards: Current Innovation (IL)
and the Industrial Commons (NC)

3

\$63M EDA Build Back Better
award to the Appalachian Climate
Technology Now (ACT Now)
Coalition (WV)

4

\$8M DOE Energy Improvements in
Rural or Remote Areas grant to
Native Renewables (Navajo
Nation)

5

\$3M in EDA Build Back Better
funding to UMWA Career Centers
unlocked (PA)

OUR
IMPACT

\$1.9 Billion

Leveraged in public investment since our inception in 2015

Since we launched our Federal Access Center in 2021, the JTF has helped communities impacted by the transition away from coal across the country access critical federal funding.

 **14,968**

Jobs Created or Retained

 **19,846**

Entrepreneurs Supported

 **8,122**

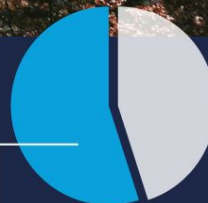
People Trained

 **943**

Businesses Created

 **76,962**

Households Connected



To date, we've supported projects in **55% of all U.S. coal communities**, or **206 counties across 28 states**.

Thank you!

Rachael Young
Just Transition Fund
ryoung@justtransitionfund.org

